

## What is SkyTracker™?

SkyTracker™ is a complete remote tank monitoring system designed to eliminate wasted product delivery stops in order to help distributors save time, energy and fuel, thus reducing operating expenses. It provides your customers with guaranteed fuel supplies and improved safety by eliminating fuel or material run-out and alerting dealers and customers when out-of-ordinary events occur.



- Easy to install and operate
- No need for external "base units" or power sources
- Helps dealers lower delivery costs
- Generates extra revenue
- Optional monitoring of CO levels, gas vapor and freezing temperatures
- Over 10,000 units in use by more than 400 companies worldwide



**NASCorp**  
NORTH AMERICAN SATELLITE CORPORATION

North American Satellite Corporation

P.O. Box 1778

Goodlettsville, TN 37070-1778

Phone (615) 859-9980

Fax (615) 859-9490

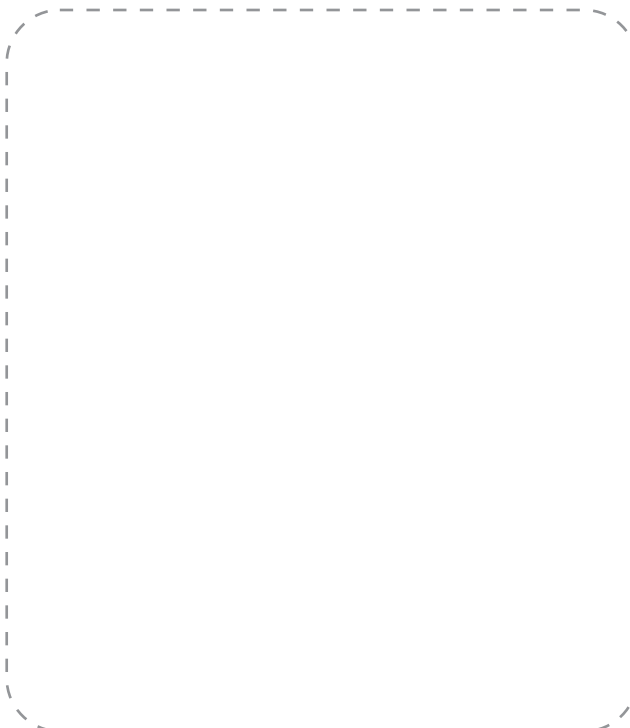
E-Mail: [nascorp@nascorp-skytracker.com](mailto:nascorp@nascorp-skytracker.com)



For more information visit our web site at:

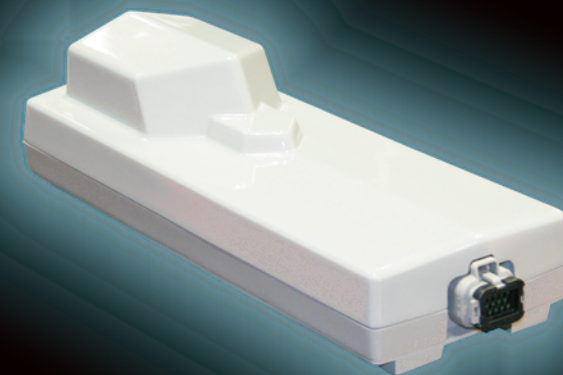
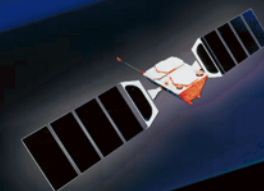
[www.nascorp-skytracker.com](http://www.nascorp-skytracker.com)

Or Contact Your Account Executive:



NASCorp, SkyTracker, SkyHelp, SkyHome and the globe logo are registered trademarks of North American Satellite Corporation. All rights reserved.

# EASY AND DEPENDABLE



## REMOTE TANK MONITORING VIA SATELLITE

ORIGINAL PATENTED TECHNOLOGY

# THE SMART REMOTE TANK MONITORING SYSTEM MADE BY PROPANE DEALERS FOR PROPANE DEALERS



3105440

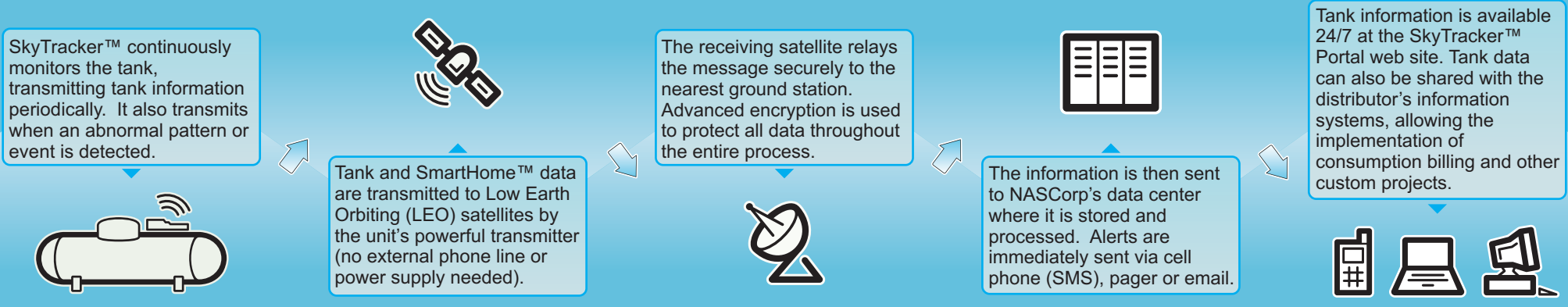
## SAFETY FIRST

The ETL certification mark is assurance that the product has been rigorously tested and found compliant with current safety standards. The tests are performed by Intertek, a Nationally Recognized Testing Laboratory (US) and a Testing Organization and Certifying Body (Canada), providing independent evaluation, testing, and certification of any electrically operated or gas- and oil-fired product. The mark also indicates that the manufacturer's production site conforms to a range of compliance measures and is subject to periodic inspections to verify continued conformance.

SkyTracker™ is a self-contained explosion-proof tank monitor device that can be installed in less than 5 minutes on any ASME-compliant tank (no technical expertise required). Once installed, SkyTracker™ starts to monitor the tank's temperature and fuel level and reports

that information periodically via satellite to NASCorp's data center. In addition to regular temperature and level monitoring, SkyTracker™ will immediately alert users when an out-of-ordinary event such as a leak, lower-than-normal usage, overfilling or stuck tank gauge happens.

## HOW SKYTRACKER™ WORKS:



**“ SkyTracker™ has been a great marketing tool for gaining new business. The customers like the fact that they are protected from leaks as well as running out. They also like being able to log on to the Internet to read their percentage and track ”**

B. Laman, HLC Cullipher LLC

<h3 style="text-align: center; margin: 0;">SAFE</h3> <ul style="list-style-type: none"> <li>➢ The only remote tank monitoring system via satellite that is ETL-Listed.</li> <li>➢ Complies with strict OSHA safety requirements.</li> <li>➢ Certified for use in all hazardous fuel locations and specifically approved for use in environments where propane is present.</li> <li>➢ Does not interfere with 911 emergency calls.</li> <li>➢ Out-of-ordinary events reported immediately to cell phones or pagers.</li> </ul>	<h3 style="text-align: center; margin: 0;">EFFICIENT</h3> <ul style="list-style-type: none"> <li>➢ Monitors events every hour 24/7/365.</li> <li>➢ Transmits tank level periodically.</li> <li>➢ Transmits out-of-ordinary events immediately.</li> <li>➢ No need for external power sources: standard battery lasts up to 2 years; extended battery lasts up to 8 years.</li> <li>➢ Efficient power management: distributors receive low battery alerts months in advance, so replacement batteries can be sent in the next regularly scheduled delivery.</li> <li>➢ Maximizes efficiency in scheduling, routing and delivery.</li> </ul>	<h3 style="text-align: center; margin: 0;">ADVANCED</h3> <ul style="list-style-type: none"> <li>➢ Transmits tank information through satellites orbiting the planet at low altitude (100 – 1240 miles above ground).</li> <li>➢ 100% geographic coverage of North America (95% of the world).</li> <li>➢ Distributors and end-users can access their tank information 24/7 via a standard web browser.</li> <li>➢ Compatible with all Microsoft Windows, Apple Macintosh and Linux systems.</li> <li>➢ State-of-the-art data center provides multiple levels of redundancy for maximum reliability and availability.</li> </ul>	<h3 style="text-align: center; margin: 0;">INNOVATIVE</h3> <ul style="list-style-type: none"> <li>➢ The first direct-to-satellite propane tank monitoring system.</li> <li>➢ Consumption billing available through leading accounting software providers.</li> <li>➢ Dealer retains ownership of the fuel at end-user locations.</li> <li>➢ End-users pay only for the fuel they use each month.</li> <li>➢ Accounting system obtains fuel levels in real time from SkyTracker™-enabled tanks.</li> <li>➢ Eliminates wasted stops saving time, energy, fuel and wear and tear on trucks.</li> </ul>	<h3 style="text-align: center; margin: 0;">BUSINESS FRIENDLY</h3> <ul style="list-style-type: none"> <li>➢ First remote tank monitoring system made by propane dealers for propane dealers.</li> <li>➢ Installs in less than 5 minutes on any ASME tank.</li> <li>➢ Self-contained – nothing to install in the customer's home or business.</li> <li>➢ Easily integrated with other business systems via a unique Application Programming Interface (API) architecture.</li> <li>➢ Used by over 400 companies in 48 U.S. states and 10 Canadian provinces, plus Australia, Israel, Jamaica, Puerto Rico and Suriname.</li> </ul>
---	--	---	---	--

Visit our web site at [www.nascorp-skytracker.com](http://www.nascorp-skytracker.com) for more product information and customer testimonials